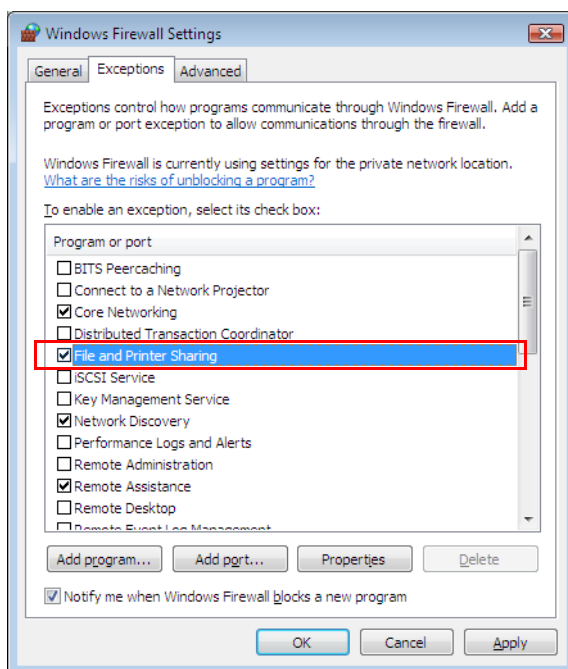
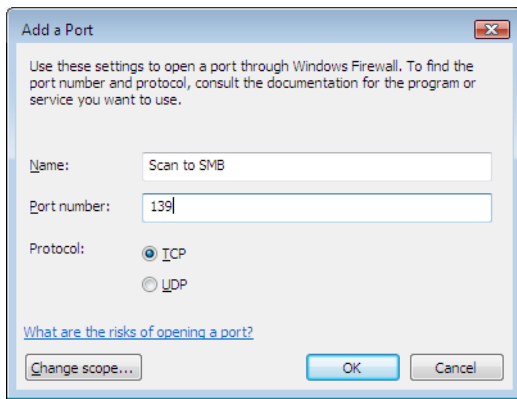

Configuring Windows Firewall (for Windows Vista)

If the destination of files is a Windows Vista-based computer, you must configure **Windows Firewall** exceptions. With exceptions, enable file and printer sharing and add a port you want use for the Scan to SMB (PC).

IMPORTANT: Log on to Windows with administrator privileges.

- 1 On the **Windows Firewall Settings** dialog box, click the **Exceptions** tab. From the **Start** menu, select **Control Panel** and click **Allow a program through Windows Firewall**.
- 2 At the **User Account Control** consent prompt, click the **Continue** button.
- 3 Click the checkbox under **File and Printer Sharing**, then click the **Apply** button.
- 4 Click the **Add port...** button. The **Add a Port** dialog box appears.





5 Enter the information on the port you want to add.

Item	Information to be entered
[Name]	Type a name for the port you want to add.
[Port number]	139
[Protocol]	Click TCP.

6 Click the **OK** button to close the **Add a Port** dialog box.

The new port is added to the list of the programs or ports.

7 Click the **OK** button to close the **Windows Firewall Settings** dialog box.

NOTE: You can communicate using port 445 for Scan to SMB (PC). To use port 445, change SMB port number to 445 via the COMMAND CENTER. When you want to change port numbers, consult your network administrator.
