

Mac OS X Snow Leopard

IS900C Driver Installation Workaround

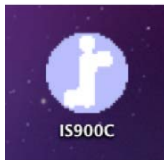
- pk -



* For questions regarding this document, please contact your local or regional RISO support representative.

Installation

1. Insert *RISO IS900C Software* CD-ROM and Double-click *IS900C* icon on the desktop.



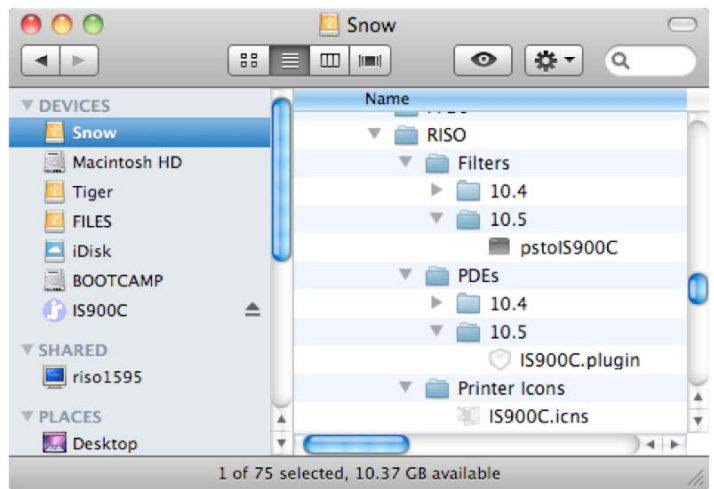
2. Double-click *IS900C-PD.pkg*



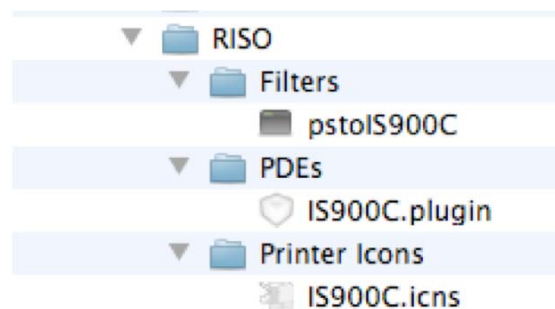
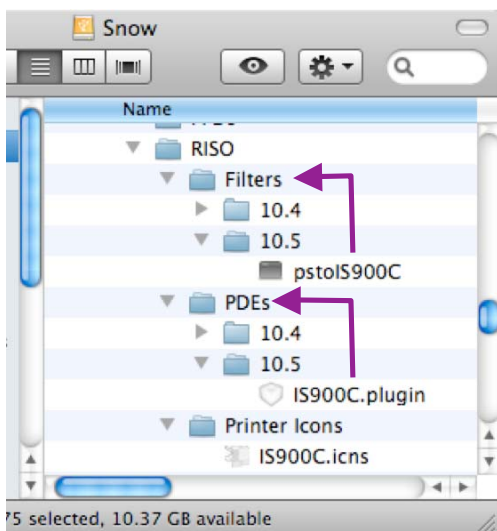
3. Step through the installation wizard and click close. You will see *"The installation failed"* ; this is ok.



4. Navigate to `\Library\Printers\RISO` folder. Expand `\Filters\10.5` and `\PDEs\10.5` folders.

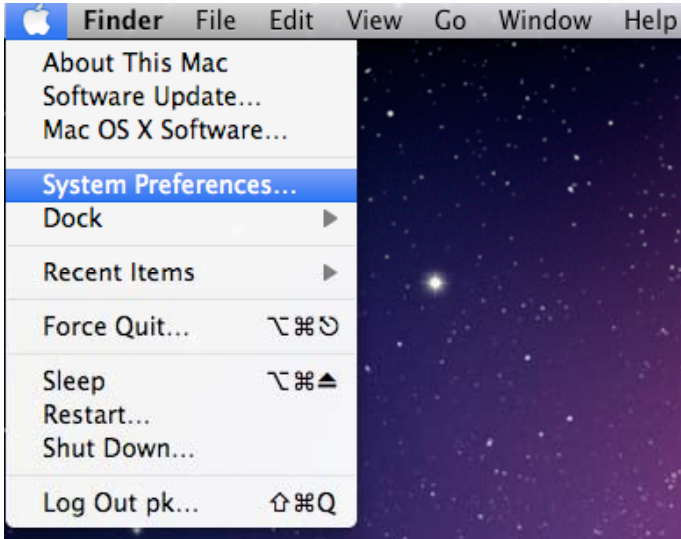


5. Drag-and-Drop **pstolIS900C** to `\Filters`. Drag-and-Drop **IS900C.plugin** to `\PDEs`. Delete **10.4** and **10.5** folders. See image on right for end result.



Add Printer

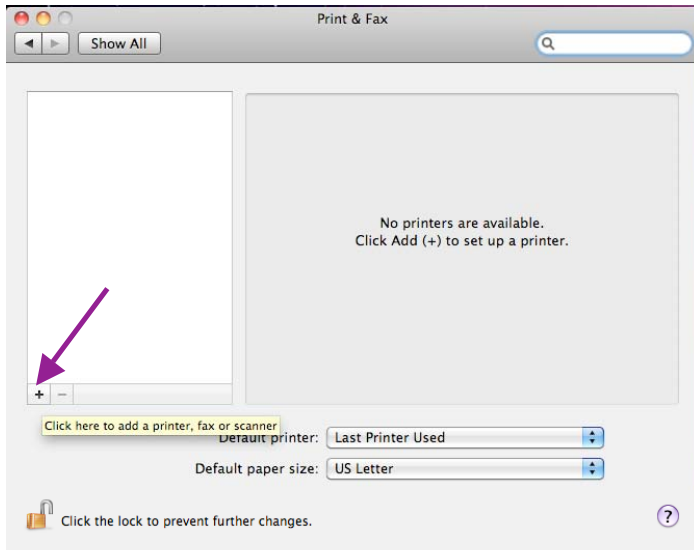
1. Go to *System Preferences...*



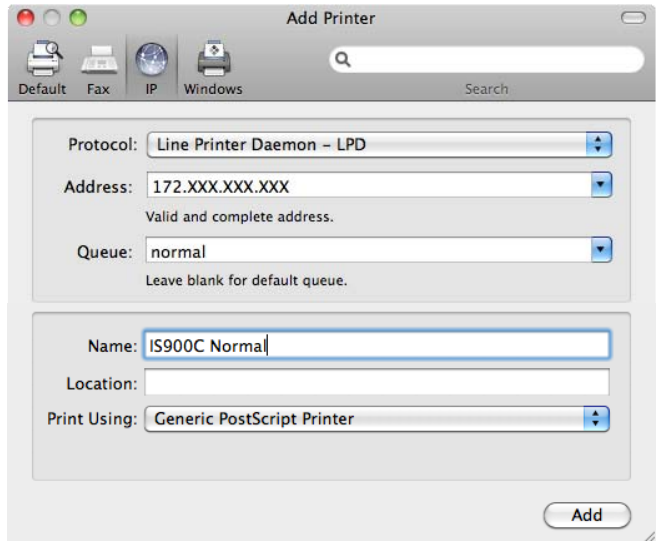
2. Click on *Print & Fax* icon.



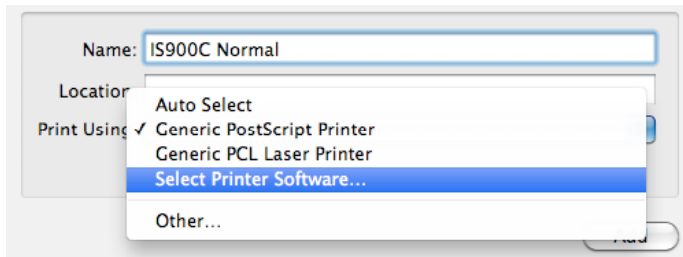
3. Click " + " button.



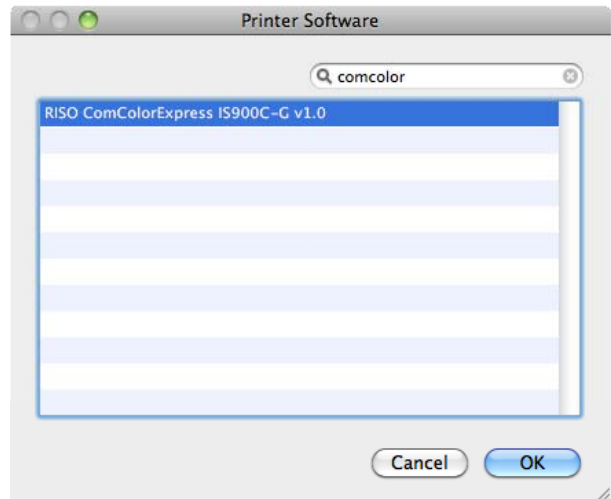
4. Input IP Address, Queue, Name. Do NOT click *Add*.



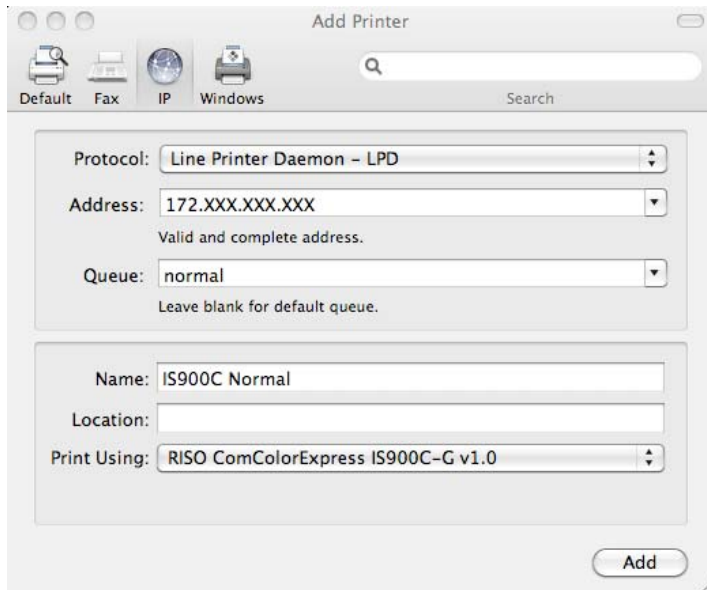
5. Change *Print Using: Generic PostScript Printer* to *Select Printer Software...*



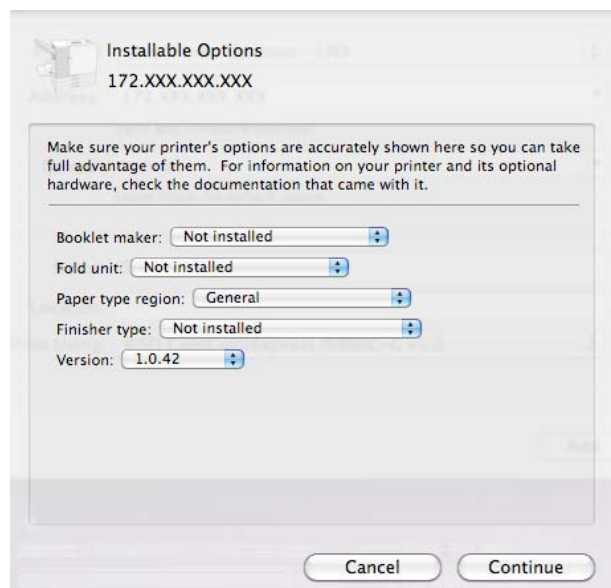
6. Select *RISO ComColorExpress IS900C-G v.1.0* and click *OK*.



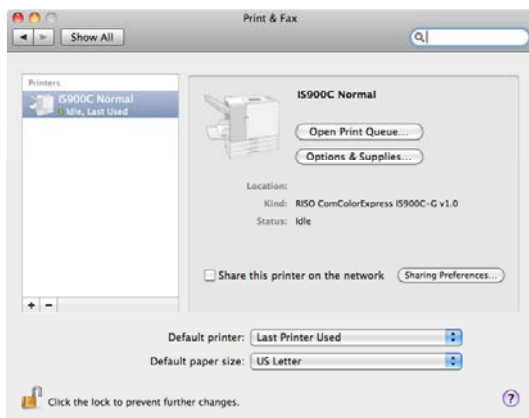
7. Click *Add*.



8. Select Printer's Options and click *Continue*.

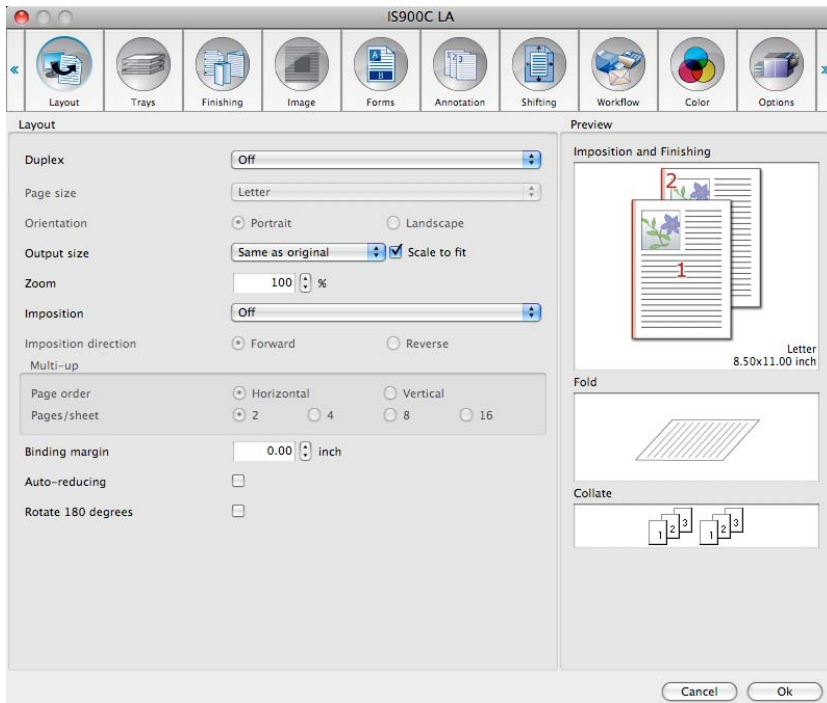


9. Installation is complete. Close *Print & Fax* window.

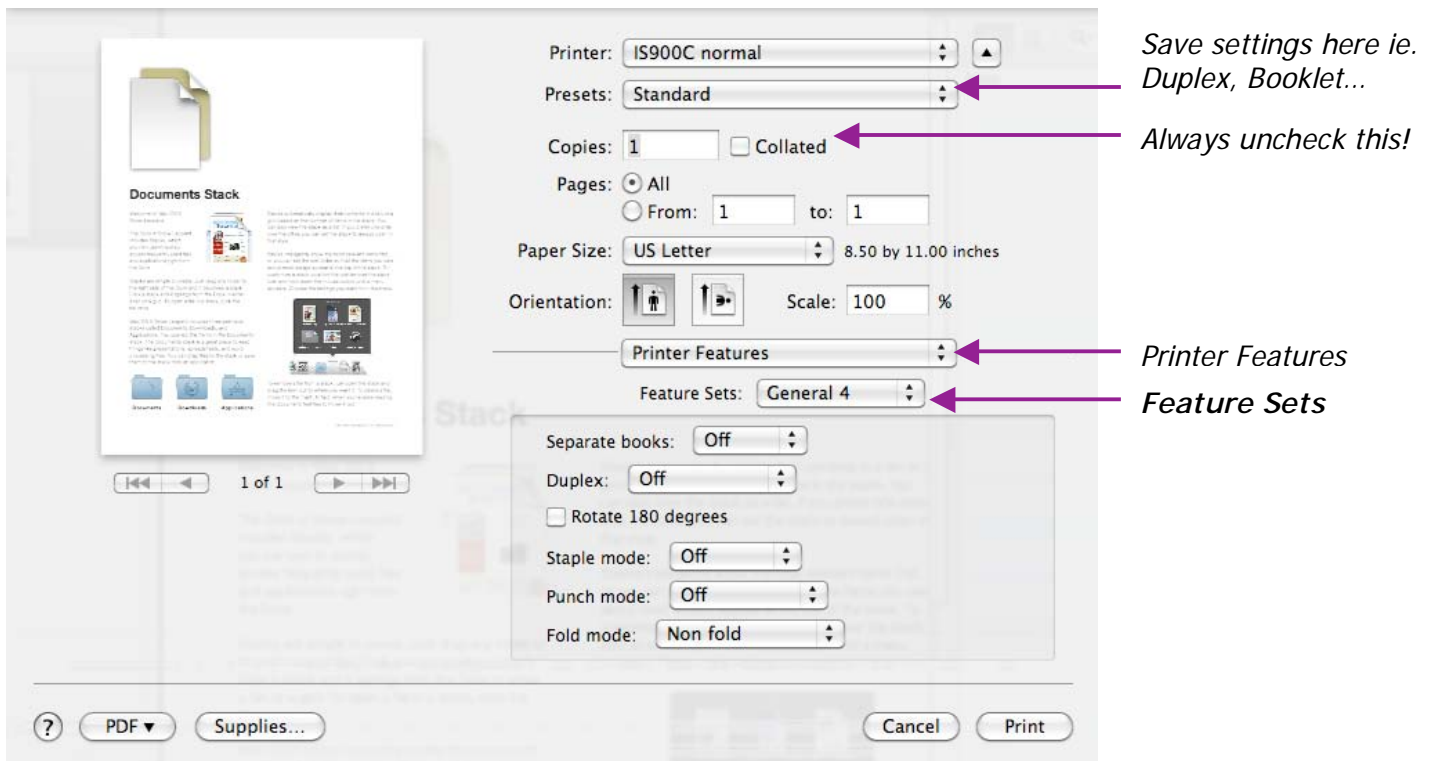


Printing

Since the plug-in component of the driver was not developed for Mac OS X Snow Leopard architecture; printer settings and features are no longer accessed via the traditional "Tab Style" window (see pic below).



Instead, printer settings are accessed via the *Feature Sets: General 1 – General 12*.



* This window may appear different in other Applications.